



# CLEARPOINT

>>> High Definition Weather


## Quick Reference Guide

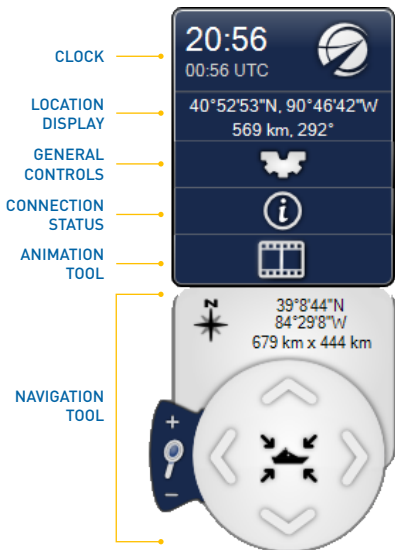


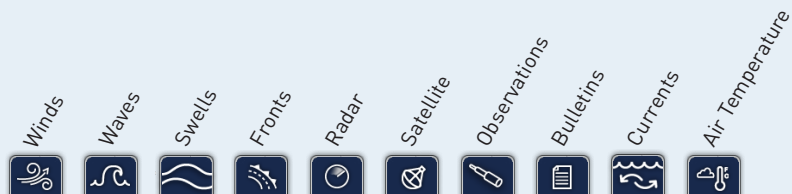
### ClearPoint Weather Map

- **Change Vessel Location**  
Double click on map.
- **Display Weather Details**  
Single click on map.
- **Zoom & Pan**  
Use the mouse wheel and mouse.

### ClearPoint Weather Control Box

- **ClearPoint Weather Clock**  
Controls the toolbar display.  
**Clear All Tools** Click once on CLOCK.  
**Expand All Tools** Click once on CLOCK.
- **Location Display**  
Shows latitude, longitude and distance from vessel to location of cursor on map.
- **General Controls**  
Click once on the GEAR icon to open the tool, click again to close the tool.
- **Connection Status**  
Click once on the  icon to open the tool, click again to close the tool.
- **Animation Tool**  
Click once on the FILM icon to open the tool, click again to close the tool.
- **Navigation Tool**  
Click on features to move, zoom, or re-center the map.





## Weather Icon Tabs

### ► View Weather Data Graphics

Click on each weather icon tab, some can be overlaid concurrently. When activated, the tab will move to the top of the display. Click on the tab again to close it.



## General Controls

### ► Critical Weather Alerts Click to read Warning.



RED - Active.  
GRAY - Inactive.

### ► GPS and Satellite Phone Connectivity



RED - No connection.  
YELLOW - Connection is in progress.  
GREEN - Connection is active.



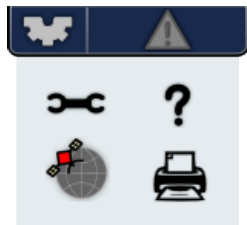
► **Help** Click QUESTION MARK icon to open documentation.



► **Configuration/Options** Click the WRENCH icon to activate the Options Settings window.

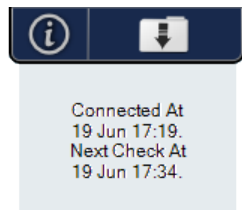


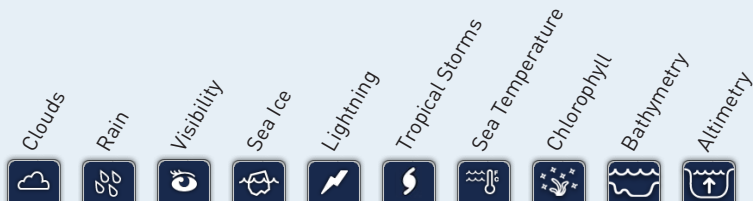
► **Print** Click the PRINTER icon to print the map display.



## Connection Status

► **Manual Update** Updates **should be scheduled** in the **Options Settings** window. If an intermediate update is needed, click the Download Folder icon and the update will begin immediately.



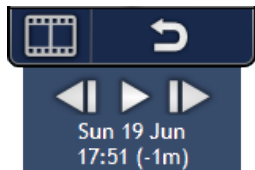


- ▶ **View Drill-Down Data** While any weather tab is active, click on the map display to view weather details in the Drill-Down data window. If multiple tabs are active, scroll arrows will appear at the top of the window to view data for each tab.



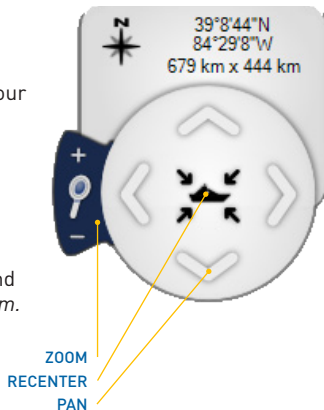
## Animation Tool

- ▶ **Current Data** Click to stop animation and reset to frame containing most current data.
- ▶ **Go Back One Frame** Click once.
- ▶ **Begin/Pause** Click once to start animation, click once again to stop.
- ▶ **Go Forward One Frame** Click once.
- ▶ **Date and Time** View in current frame.



## Navigation Tool

- ▶ **Recenter** Click once to re-orient the map to your vessel location.
- ▶ **Pan** Click arrows to incrementally pan map north, south, east, or west. *Or click and drag mouse cursor to pan.*
- ▶ **Zoom** Click + or - to incrementally zoom in and zoom out. *Mouse wheel can also be used to zoom.*



## Minimum System Requirements

ClearPoint Weather Software runs on Windows 2000, XP, Vista, Windows 7.

An Internet connection is required to receive weather data.

The minimum system configuration is:

- Intel Core or AMD Athlon processor
- 1 GB RAM
- Screen resolution of 1024x768 pixels
- Microsoft's .NET Framework 4.0 installed

## Important Links to the ClearPoint Weather Website

You will find everything you need to know about the ClearPoint Weather Service and other important weather and marine resources by visiting our website:

<http://ClearPointWeather.com>

To download the most recent version of the software, go to:

<http://ClearPointWeather.com/Download>

If you are new to the ClearPoint Weather Service and would like to subscribe for the first time go to:

<http://ClearPointWeather.com/Subscribe>

If you are a current subscriber to the ClearPoint Weather Service, or if you have an account that you need to reactivate, maintain, or upgrade, you may go to:

<https://ClearPointWeather.com/Account>



**CLEARPOINT**

➤➤➤ High Definition Weather

CALL + 1-310-285-8465 INTERNATIONAL

EMAIL [info@clearpointweather.com](mailto:info@clearpointweather.com)

VISIT [www.clearpointweather.com](http://www.clearpointweather.com)

CLEARPOINT, CLEARPOINT High Definition Weather and the CLEARPOINT logo are trademarks of ClearPoint International, LLC.

© 2011 ClearPoint International, LLC, ALL RIGHTS RESERVED